



REGIONAL SPECIALISED METEOROLOGICAL CENTRE-TROPICAL CYCLONES, NEW DELHI TROPICAL WEATHER OUTLOOK

DEMS-RSMC TROPICAL CYCLONES NEW DELHI DATED 17.05.2024

TROPICAL WEATHER OUTLOOK FOR NORTH INDIAN OCEAN (THE BAY OF BENGAL AND THE ARABIAN SEA) VALID FOR NEXT 168 HOURS ISSUED AT 0600 UTC OF 17.05.2024 BASED ON 0300 UTC OF 17.05.2024.

BAY OF BENGAL:

YESTERDAYS CYCLONIC CIRCULATION OVER COMORIN AREA & ADJOINING SOUTH TAMIL NADU COAST LAY OVER SOUTH TAMIL NADU & NEIGHBOURHOOD AT 3.1 KM ABOVE MEAN SEA LEVEL AT 0300 UTC OF TODAY, 17TH MAY, 2024.

SCATTERED TO BROKEN LOW AND MEDIUM CLOUDS WITH EMBEDDED INTENSE TO VERY INTENSE CONVECTION LAY OVER SOUTH BAY OF BENGAL (MINIMUM CLOUD TOP TEMPERATURE -93°C) AND ANDAMAN SEA (MINIMUM CLOUD TOP TEMPERATURE -93°C). SCATTERED LOW AND MEDIUM CLOUDS WITH EMBEDDED MODERATE TO INTENSE CONVECTION LAY OVER CENTAL BAY OF BENGAL.

***PROBABILITY OF CYCLOGENESIS (FORMATION OF DEPRESSION) DURING NEXT 168 HRS:**

24 HOURS	24-48 HOURS	48-72 HOURS	72-96 HOURS	96-120 HOURS	120-144 HOURS	144-168 HOURS
NIL	NIL	NIL	NIL	NIL	NIL	LOW

***NOTE: EVERY 24HR FORECAST IS VALID UPTO 0300 UTC (0830 IST) OF NEXT DAY**

ARABIAN SEA:

YESTERDAY'S CYCLONIC CIRCULATION OVER WESTCENTRAL ARABIAN SEA OFF YEMEN COAST UPTO 4.5 KM ABOVE MEAN SEA LEVEL PERSISTED AT 0300 UTC OF TODAY, 17TH APRIL, 2024.

SCATTERED LOW AND MEDIUM CLOUDS WITH EMBEDDED INTENSE TO VERY INTENSE CONVECTION LAY OVER SOUTHEAST ARABIAN SEA COMORIN AREA & MALDIVES AREA (MINIMUM CLOUD TOP TEMPERATURE -93°C). SCATTERED LOW AND MEDIUM CLOUDS WITH EMBEDDED MODERATE TO INTENSE CONVECTION LAY OVER EASTCENTRAL ARABIAN SEA & LAKSHADWEEP ISLANDS AREA.

***PROBABILITY OF CYCLOGENESIS (FORMATION OF DEPRESSION) DURING NEXT 168 HRS:**

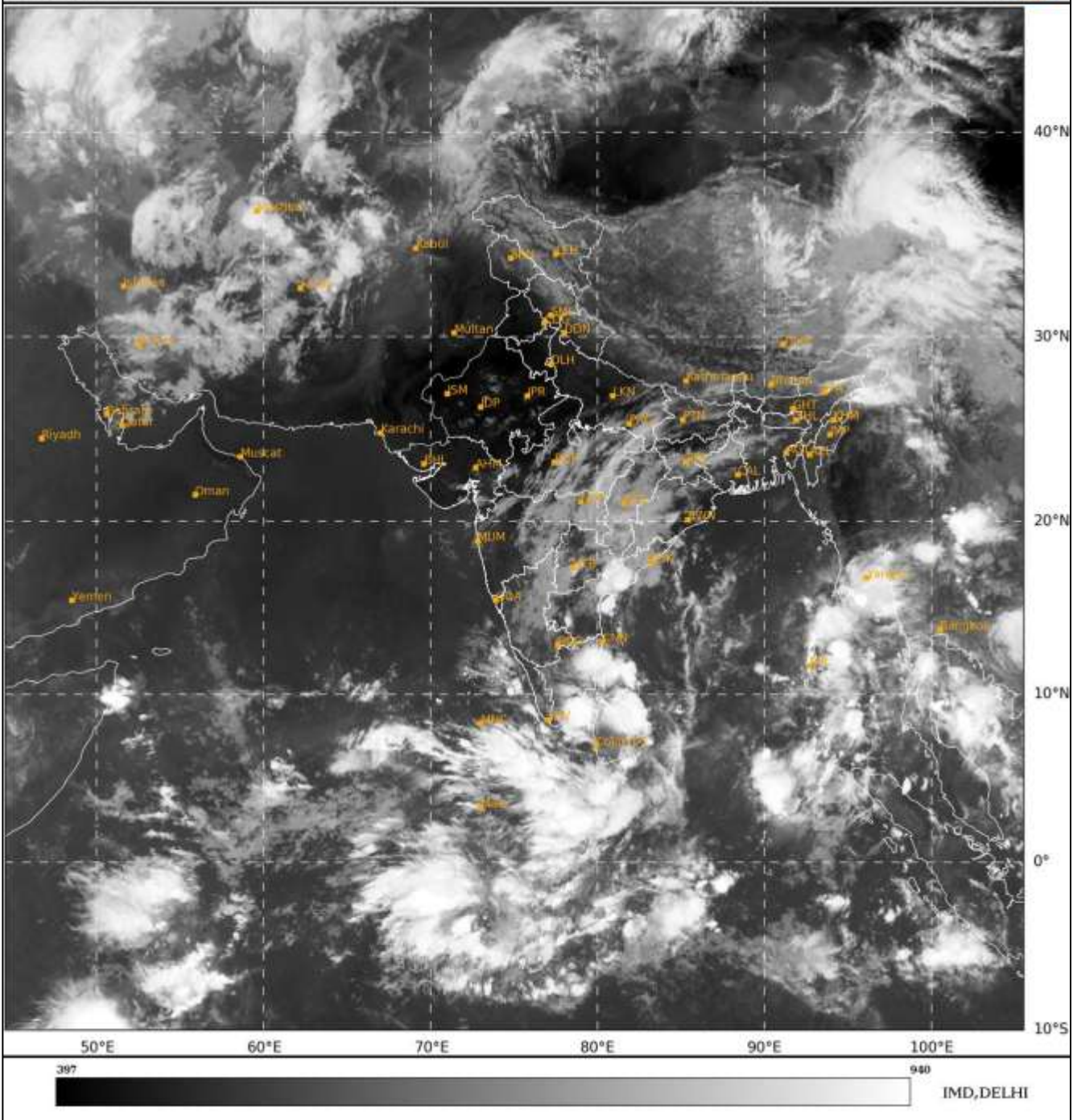
24 HOURS	24-48 HOURS	48-72 HOURS	72-96 HOURS	96-120 HOURS	120-144 HOURS	144-168 HOURS
NIL	NIL	NIL	NIL	NIL	NIL	NIL

***NOTE: EVERY 24HR FORECAST IS VALID UPTO 0300 UTC (0830 IST) OF NEXT DAY**

REMARKS: NIL.

SAT : INSAT-3D IMG
IMG_TIR1 10.8 um
LIC Mercator

17-05-2024/(0300 to 0326) GMT
17-05-2024/(0830 to 0856) IST



Cloud distribution: (a) Isolated: <25%, Scattered:25-50%, Broken: 51-75%, Solid:>75%, Convection Intensity: (a) Weak: Cloud Top Temperature (CTT) >-25°C, (b) Moderate: CTT: - 25°C to -40°C, (c) Intense: CTT: - 41°C to -70°C and (d) Very Intense: : Less than -70°C

PROBABILITY OF CYCLOGENESIS (FORMATION OF DEPRESSION):NIL: 0%, LOW: 1-33%, , MODERATE: 34-66% AND HIGH: 67-100%

This is a guidance Bulletin for WMO/ESCAP Panel Member countries. Visit respective National websites for Country specific Bulletins